

# Neurology for the PCP

Friday, Nov. 8 • MSU Management Education Center

## Description

This conference is geared toward primary care partners. The key objectives are to help the primary care provider identify neurological symptoms and treatment options.

## Target audience

- Physicians.
- Physician assistants.
- Nurses.
- Nurse practitioners.
- Physical and occupational therapists.
- Allied health.
- Residents, fellows and medical students in the specialties of family medicine, internal medicine and pediatrics.

## Objectives

At the conclusion of this activity, learners should be better able to:

- Identify signs and symptoms associated with specific neurologic disorders.
- Explain treatment options for patients with neurological symptoms.
- Instruct participants on guidelines for patient referral.
- Describe follow-up recommendations to reduce readmissions.

## Faculty disclosure

All speakers and members of the planning committee have been asked to disclose any relevant relationships they may have with commercial interests. The presence or absence of relationships will be disclosed at the time of the meeting.

## Accreditation statement (CME accreditation)

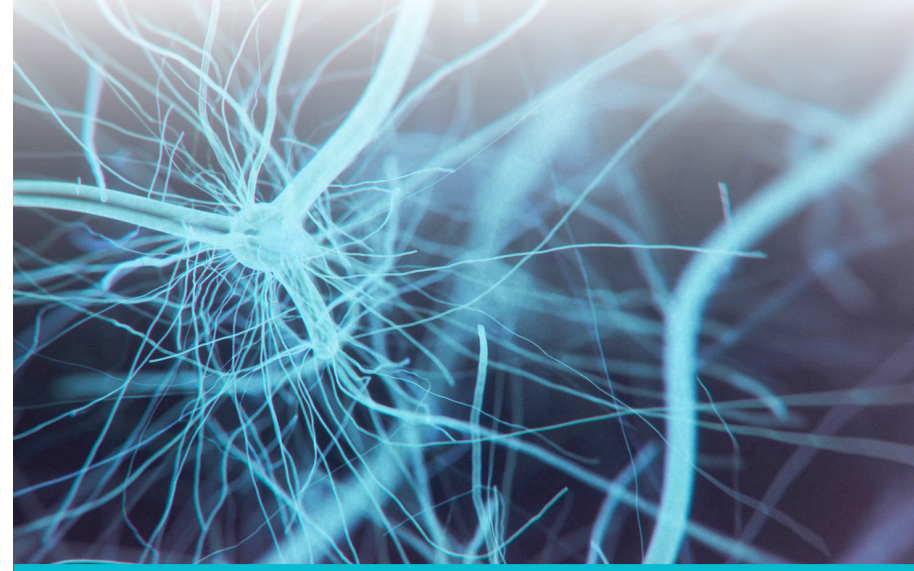
This activity is approved for **AMA PRA Category 1 Credits™** and **ANCC Nursing Contact Hours**.

This activity has been approved for **ACPE contact hours for pharmacists and pharmacy technician**.

For more information, including specific CME credit information, visit

[beaumont.cloud-cme.com/neuropcp2024](https://beaumont.cloud-cme.com/neuropcp2024).

NON-PROFIT ORG  
U.S. POSTAGE  
**PAID**  
PERMIT NO 404  
ROYAL OAK  
MICHIGAN



# Neurology for the primary care partners (PCP)

Care and management of the neurology patient for primary care clinicians.

**Friday, Nov. 8, 2024**

**MSU Management Education Center**  
811 Square Lake Road • Troy, MI 48098

Neuroscience Center  
3555 W. 13 Mile Road, Suite N120  
Royal Oak, MI 48073

# Neurology for the PCP

Friday, Nov. 8, 2024

MSU Management Education Center  
Troy, MI

 Corewell Health™

CH\_25470dL\_25657 © Corewell Health 07/2024

 Corewell Health™

## Faculty and planning committee\*

### \*Activity Director

#### Daniel Menkes, M.D.

Neurology Health System  
Chair, Corewell Health William  
Beaumont Hospital,  
Royal Oak, MI  
Professor, OUWB School  
of Medicine

#### Annas Aljasseem, M.D.

Physical Medicine and  
Rehabilitation, Corewell Health  
William Beaumont Hospital,  
Royal Oak, MI  
Assistant Professor, PM&R,  
OUWB School of Medicine

#### Lauren Aymen, D.O.

Neurology, Corewell Health  
William Beaumont Hospital,  
Royal Oak, MI  
Assistant Professor, Neurology,  
OUWB School of Medicine

#### Jonathan Fellows, D.O.

Neurology, Corewell Health  
William Beaumont Hospital,  
Royal Oak, MI  
Assistant Professor, Neurology,  
OUWB School of Medicine

#### Rebecca Grysiewicz, D.O.

Neurology, Corewell Health  
William Beaumont Hospital,  
Royal Oak, MI  
Assistant Professor, Neurology,  
OUWB School of Medicine

#### Meghan Harper-Shankie, M.D.

Pediatrics, Corewell Health  
William Beaumont Hospital,  
Royal Oak, MI  
Instructor, Pediatrics,  
OUWB School of Medicine

#### Muhib Khan, M.D.

Neurology, Vascular Stroke  
Specialist, Mayo Clinic,  
Rochester, NY

#### Adam Kuhlman, D.O.

Neurology, Corewell Health  
William Beaumont Hospital,  
Royal Oak, MI

Assistant Professor, Neurology,  
OUWB School of Medicine

#### \*Anne Marie Michon, MSN-RN, CPNP-PC

Pediatrics  
Health William Beaumont  
Hospital, Royal Oak

Assistant Professor, Neurology,  
OUWB School of Medicine

#### Nadar Mina, M.D.

Pediatrics, Corewell Health  
Children's William Beaumont  
Hospital,  
Royal Oak, MI

#### Susan Musto, Ph.D.-c, ANP-BC

Neurology, Corewell Health  
William Beaumont Hospital,  
Royal Oak, MI

#### \*Lori Sheridan, BBA

Neuroscience Outreach  
Coordinator, Corewell Health  
William Beaumont Hospital,  
Royal Oak, MI

#### Rasha Waheed, M.D.

Neurology, Corewell Health  
William Beaumont Hospital,  
Royal Oak, MI

#### Maya Zayat, Psy.D, ABPP-CN

Pediatrics, Corewell Health  
William Beaumont Hospital,  
Royal Oak, MI

#### Andrew Zillgitt, D.O.

Neurology, Corewell Health  
William Beaumont Hospital,  
Royal Oak, MI

Associate Professor, Neurology,  
OUWB School of Medicine

## Agenda

|                      |                                                                                                                                  |
|----------------------|----------------------------------------------------------------------------------------------------------------------------------|
| 7:30–7:35 a.m.       | Welcome   Daniel Menkes, M.D.                                                                                                    |
| 7:35–8:10 a.m.       | Movement Disorders<br>Adam Kuhlman, D.O.                                                                                         |
| 8:10–8:30 a.m.       | Pediatric Neuromuscular Patient –<br>Coordination of Care<br>Meghan Harper-Shankie, M.D.                                         |
| 8:30–8:50 a.m.       | Adult Neuromuscular<br>Daniel Menkes, D.O.                                                                                       |
| 8:50–9:40 a.m.       | Neuropathic Pain Management<br>Annas Aljasseem, M.D.                                                                             |
| 9:40–9:55 a.m.       | Panel Discussion with session speakers<br>Adam Kuhlman, D.O.                                                                     |
| 9:55–10:15 a.m.      | <b>Break</b>                                                                                                                     |
| 10:15–11:15 a.m.     | Stroke Management for the PCP<br>Keynote Address<br>Muhib Khan, M.D.<br>Vascular Stroke Specialist<br>Mayo Clinic, Rochester, NY |
| 11:15 a.m–12:05 p.m. | Adult Dementia<br>Jonathan Fellows, D.O.                                                                                         |
| 12:05–1 p.m.         | <b>Lunch</b>                                                                                                                     |
| 1–1:45 p.m.          | Headache Management for the PCP<br>Lauren Aymen, D.O.                                                                            |
| 1:45–2:30 p.m.       | Sleep Disorders – Identification<br>and Management   Nader Mina, M.D.                                                            |
| 2:30–3 p.m.          | Concussion Management – where we<br>are now   Susan Musto, Ph.D.-c, ANP-BC.                                                      |
| 3–3:20 p.m.          | Panel Discussion with Session Speakers<br>Maya Zayat, PsyD.                                                                      |
| 3:20–3:40 p.m.       | <b>Break</b>                                                                                                                     |
| 3:40–4:20 p.m.       | Multiple Sclerosis – Identification and<br>Treatment Options   Waheed Rasha, M.D.                                                |
| 4:20–4:30 p.m.       | Closing remarks   Daniel Menkes, MD                                                                                              |

The agenda and number of credits available are subject to change.

# Neurology for the PCP

Friday, Nov. 8 • MSU Management  
Education Center



Registration link  
[beaumont.cloud-cme.com/neuropcp2024](https://beaumont.cloud-cme.com/neuropcp2024)

| Category description     | Virtual               | In person    |              |
|--------------------------|-----------------------|--------------|--------------|
|                          | must register by 11/5 | through 11/5 | day of event |
| Physician                | \$125                 | \$175        | \$200        |
| Non-physician            | \$75                  | \$125        | \$150        |
| Resident/fellow (No CME) | \$75                  | \$125        | \$150        |
| Medical student (No CME) | \$25                  | \$75         | \$100        |

Cancellations or refund requests must be received by November 5, 2024. A processing fee of \$30 will be assessed to all canceled registrations. Cancellation and refund requests after November 5, 2024 will not be honored. To cancel a registration, email: [CHEcme@corewellhealth.org](mailto:CHEcme@corewellhealth.org) with "Cancellation" in the subject line.

**Registration questions:** email Becky Kirk at [rebecca.kirk@corewellhealth.org](mailto:rebecca.kirk@corewellhealth.org)

**CME-related questions:** contact [CHEcme@corewellhealth.org](mailto:CHEcme@corewellhealth.org)

**Event related questions:** contact Lori Sheridan at **248.551.2309** or [lori.sheridan@corewellhealth.org](mailto:lori.sheridan@corewellhealth.org)

Corewell Health is committed to making its activities accessible to all individuals. If you are in need of a special accommodation, please do not hesitate to contact us.